

MONTHLY MEMBERSHIP PROGRESS REPORT

LOCATION REP OF BANGLADESH

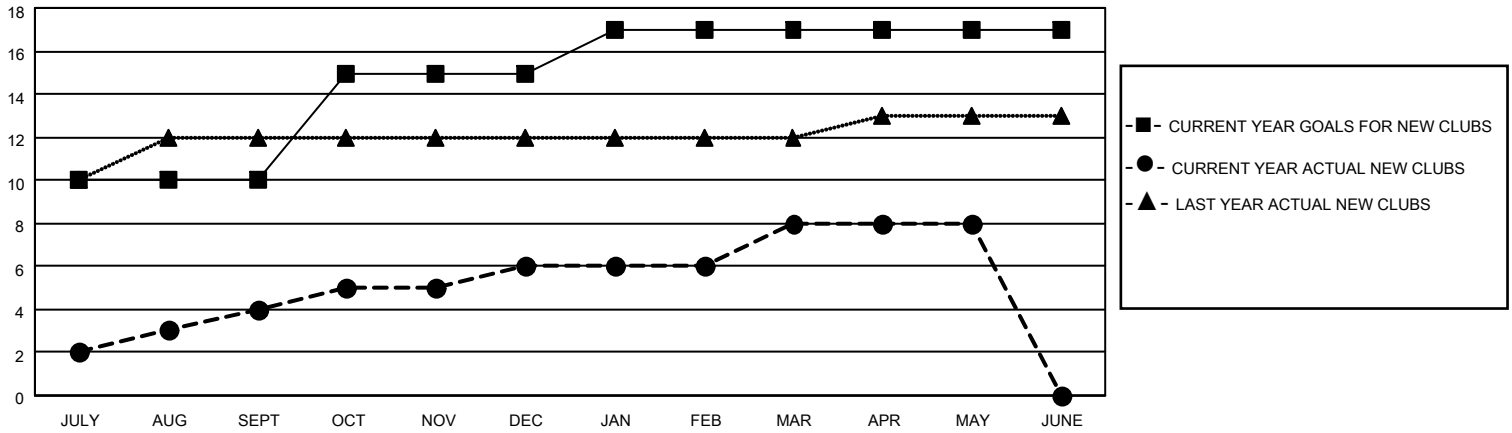
District 315A2

Results as of: 5/31/2023

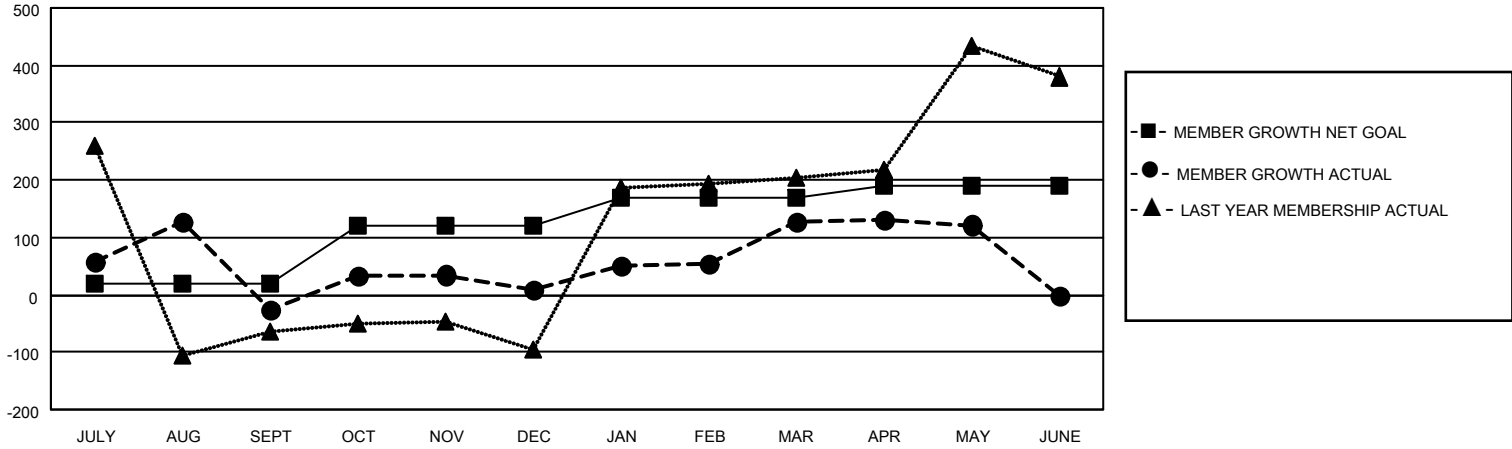
Clubs			
RESULTS FOR 2022-2023			
QUARTER	NEW CLUB GOAL	NEW CLUBS	DROPPED CLUBS
JULY/AUG/SEPT	10	4	0
OCT/NOV/DEC	5	2	5
JAN/FEB/MAR	2	2	1
APR/MAY/JUNE	0	0	0

Members			
RESULTS FOR 2022-2023			
QUARTER	MEMBER GROWTH NET GOAL	MEMBER GROWTH ACTUAL	DROPPED MEMBERS ACTUAL (including transfers)
JULY/AUG/SEPT	20	185	205
OCT/NOV/DEC	100	140	100
JAN/FEB/MAR	50	161	41
APR/MAY/JUNE	20	246	178

GOALS AND ACTUAL NEW CLUBS CUMULATIVE



GOALS AND ACTUAL MEMBERS CUMULATIVE



DROPPED CLUBS: 6	
DROPPED MEMBERS	
DECEASED	0
CLUB CANCELLED	42
OTHER	482
TOTAL	524

69 CLUBS OF 95 ADDED 1 OR MORE NEW MEMBERS

[CLICK HERE FOR CUMULATIVE MEMBERSHIP DATA](#)

<u>GENDER DISTRIBUTION</u>	
MALE	2,016 (70.15%)
FEMALE	858 (29.85%)
NON BINARY	0 (0.00%)
PREFER NOT TO ANSWER	0 (0.00%)
TOTAL FAMILY UNIT MEMBERS	
	1,800
FAMILY MEMBERS PAYING HALF DUES	
	1,328